

INSTITUTION OF  
EMINENCE



nirf



India Ranking 2023  
Universities Category

# Inspire Excellence



#INSPIRE  
MAHE B'LRU



**MANIPAL**

ACADEMY of HIGHER EDUCATION  
BENGALURU CAMPUS

(Institution of Eminence Deemed to be University)





**At Manipal Academy of Higher Education, Bengaluru (MAHE B'lr), we have created an inspiring, future relevant learning ecosystem, on a new age tech enabled living campus. Here, our students immerse themselves, transform and discover multiple choices and opportunities.**

An institute of eminence, we blend traditional and new ways of learning through multiple diverse, contemporary, relevant and future oriented programs and extracurricular activities. The city of Bengaluru, and our legacy inspires us, to inspire our students, so that they inspire us, inspire the world!



We are located in Bengaluru, also known as the 'Silicon Valley', 'Garden City' and 'Knowledge Capital' of India.

In a city that inspires intelligence and innovation, our learners live in the now and are prepared for the future through a journey of inspiration. The city is one of the top education hubs in India and is also home to an array of start-ups, businesses, rich ambiance and diverse culture.

- Ranked 5th in the world for Tech Venture Capital Investments.
- 3rd highest number of Tech start-ups globally.
- 57% of India's start-up funding.
- Start-up funding on \$31 billion raised in the last decade





Our 80 acre sustainable, new age campus located in Yelahanka, North Bengaluru inspires our students with the ideal mix of cutting edge academics and extracurricular activities.

We provide students a whole life experience in a natural and social space. They find a safe place to explore, expand, and feel at home.

# #INSPIRE OPPORTUNITIES

Located within 30 minutes from the Kempegowda International Airport, the campus is equipped with state-of-the-art infrastructure, enriched by our well-qualified, experienced faculty and mentors. We have planted over a 1000 trees, while preserving the existing green cover to ensure that our students are molded, shaped and prepared for the demands of the roles and opportunities of the future in a sustainable campus and ecosystem.

Our hostels are a mélange of different types of rooms to best suit our students who come from various strata of the society. There is a dedicated team of officials and workers to make their stay comfortable, and provide an ambience of a home away from home.

Managed by the Hostel Management Committee, the hostel environment is conducive to learning. Besides, it takes care of the housing, food, recreation, and wellness of all UG and PG students. Many students from different geographical backgrounds study, mingle, and play together, making MAHE B'lu a vibrant campus.

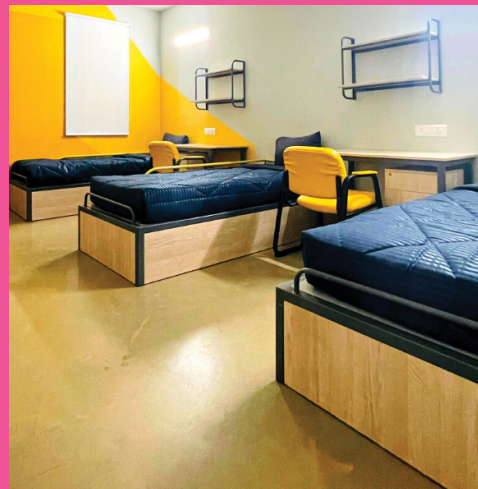
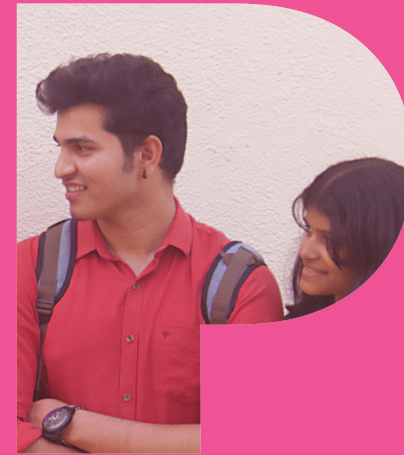
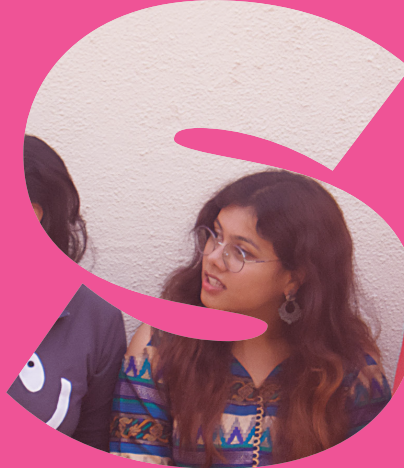
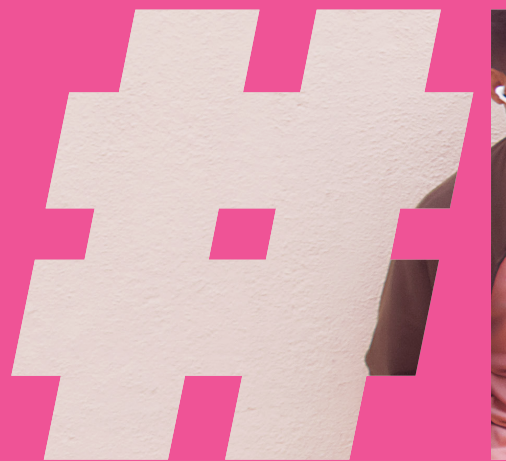


scan to see the website





- World class infrastructure
- Premium Hostel Facility
- Extracurriculars
- Medical Care
- Clubs and Committees
- Mentoring Support
- Computer Labs
- Classrooms
- Auditorium
- Library with Digital/E-resources



Not just a University, we are a Multiversity- the source of infinite inspiration. It is this inspiration and the multiplicity of choice which helps our students realize their true potential and future opportunities, to emerge as inspirers, optimizers, value creators and pathbreakers equipped with the skills, knowledge and mindset to thrive and excel in the future.



## DEPARTMENT OF COMMERCE (DOC)

# #INSPIRE ANALYTICS



One of the most active and thriving departments on our campus, the Department of Commerce (DOC) provides a multidisciplinary interactive environment. This equips our students with the skills to explore, experiment, and imbibe an in-depth understanding of the trading sector and business activities.

The DOC offers both Undergraduate and Postgraduate Courses. Our curriculum framework of all the courses is meticulously designed to meet industry standards and is in congruence with the National Education Policy (NEP) - 2020. The department also facilitates US CMA (Certified Management Accountant) program and CA (Chartered Accountant) foundation and intermediate exams

#### PROGRAMMES OFFERED

**B.Com (Hons)**  
Integrated with ACCA

Corporate Accounting,  
Business Analytics,  
Banking & Finance

**M.Com**  
Integrated with ACCA  
Finance & Accounting

## DEPARTMENT OF PUBLIC POLICY (DPP)

The Department of Public Policy (DPP) at MAHE BIRU is a Policy Simulation Lab. Our students undertake projects on current policy problems as internships from Industry, academia, and development sectors. They learn through the simulation of futuristic solutions in Public Policy to achieve effective population outcomes.

Public Policymaking in the 21st century is complex and uncertain. Government, industry, think-tank, and academia are looking for professionals who can understand these complexities of policy making and policy advocacy.

BA Public Policy and Administration is a unique programme extending education in policymaking to governance and creating opportunities for young minds to pursue the goals of serving in Civil Services over a three-year Regular or a four-year Honours programme incorporating the vision of NEP 2020.

Our 2-year Postgraduate Programme comes at a critical and opportune time to bridge the demand supply gap of trained Policy Makers and Analysts. Our curriculum framework is meticulously designed to meet industry standards and is in congruence with the National Education Policy (NEP) - 2020.

# #INSPIRE CHANGE



#### PROGRAMMES OFFERED

**BA (Hons)**  
Public Policy &  
Administration

**MA**  
Public Policy



## MANIPAL LAW SCHOOL (MLS)

Manipal Law School (MLS) at MAHE B'lrur strives to create a paradigm shift in the field of legal education. Aspiring to be a Global Law School in the near future, MLS focuses on helping students comprehend multi-dimensional legal systems. Our objective is to develop their abilities by persuasively enhancing their written and oral skills, help them anticipate outcomes, besides, use research and analytical skills in problem-solving.



### PROGRAMMES OFFERED

**BA LLB (Hons)**

**BBA LLB (Hons)**

**B.Com LLB (Hons)**

**LLM**

One-year LLM for Fresh Law Graduates and Working Legal Professionals

Data Privacy Law and Cyber Law  
Information Technology Law

Our curricula and pedagogy aims to be at par with leading law schools by integrating contemporary global issues and standard legal practices. Cutting edge technology and law interface is one of the research domains that will foster creation of tech lawyers / professionals.

Our curriculum framework is meticulously designed to meet industry standards and is in congruence with the National Education Policy (NEP) - 2020.

## DEPARTMENT OF LIBERAL ARTS, HUMANITIES AND SOCIAL SCIENCES (DLHS)

### PROGRAMMES OFFERED

**BA (Hons)**

Journalism and  
Mass Communication

Psychology

English

**Double Major**

History

Political Science

Sociology

Economics

**MA**

Multimedia and  
Communication

English Language  
and Literature

The Department of Liberal Arts, Humanities, and Social Sciences (DLHS) is one of the most active and thriving departments on campus. Our emphasis is on equipping students with conceptual knowledge, analytical and life skills, as well as communicative proficiencies through a transdisciplinary approach. Our objective is to inspire students in developing their overall personalities and enable them to confront real-world difficulties with the appropriate attitude and ability.

DLHS offers Under-Graduate and Postgraduate courses. All our courses are designed to integrate several practical skill-oriented components into the curriculum with the Choice Based Credit System (CBCS) and Continuous Assessment and Grading Pattern (CAGP) of education at its core. The curriculum framework is meticulously designed to meet industry standards and is in congruence with the National Education Policy (NEP) - 2020.





## MANIPAL INSTITUTE OF TECHNOLOGY (MIT-BLR)

The Garden City of India is now home to a new engineering institution – 'MIT Bengaluru' – our latest constituent. The new engineering campus of MIT Bengaluru offers six B.Tech programs since 2021, with approval from the All India Council of Technical Education (AICTE), MHRD, Government of India. The five approved programs are Computer Science and Engineering, Information Technology, Electronics and Communication, Computer Science and Engineering – Artificial Intelligence, and Computer Science and Engineering – Cyber Security.



# #INSPIRE TECHNOVATION

**PROGRAMMES OFFERED**

- B.Tech**
  - Computer Science & Engineering (CSE)
  - CSE (Artificial Intelligence)
  - CSE (Cyber Security)
  - CSE (Data Science)
- Information Technology
- Electronics and Communication Engineering
- Electronics and Computer Engineering

## MANIPAL INSTITUTE OF REGENERATIVE MEDICINE (MIRM)

Established in 2007, Manipal Institute of Regenerative Medicine (MIRM) is one of the country's first stem cell training institutes. In addition to didactic and practical courses, it conducts annual workshops on stem cells and applications approved by ICMR with the objective of integrating education and research, and enhancing understanding of stem cells and their differentiation process required for the development of drug screening and therapies to treat human diseases.

The curriculum of MIRM is recognized internationally by reputed universities across Europe, Australia and USA.



# #INSPIRE HEALING

**PROGRAMMES OFFERED**

- M.Sc**
  - Stem Cell Technology & Regenerative Biology
  - Translational Neuroscience (by research)
- Advanced PG Diploma**
- Ph.D**
  - Regenerative Medicine



# MANIPAL COLLEGE OF HEALTH PROFESSIONS (MCHP)

The Manipal College of Health Professions (MCHP) was established in 1999 as the first institution in India exclusively dedicated to the education of allied health professionals. Ranked 3rd among allied health colleges in India, it envisions training healthcare professionals, who can create a difference in the quality of life of individuals, both physically and mentally. We offer Bachelors, Masters and Doctoral degree programs. It is attached to Kasturba Hospital, one of the best tertiary care hospitals of southern India.



## PROGRAMMES OFFERED

### Master of Physiotherapy (MPT)

Musculoskeletal Sciences  
Cardiorespiratory Sciences  
Neurosciences  
Pediatrics

### M.Sc.

Cardiovascular Technology (CVT)  
Cardio Catheterization & Intervention Technology  
Echocardiography  
Clinical Psychology  
Renal Replacement and Dialysis and Technology  
Laboratory Technology  
Radio Imaging Technology  
Genomic Counseling

## T.A PAI MANAGEMENT INSTITUTE (TAPMI-BLR)

Established in 1980 at Manipal, T.A Pai Management Institute is a constituent of Manipal Academy of Higher Education. TAPMI is among the seventeen institutes in India and 5% of the top business schools worldwide to have been accredited with the Association to Advance Collegiate Schools of Business (AACSB) accreditation, the oldest international accreditation in the world of business education.

TAPMI is also accredited by Association of MBAs (AMBA), another prestigious international accreditation agency. Thus, it is among only six institutions in the country that are "double-crowned", having two out of the three coveted international accreditations.

TAPMI is consistently ranked within the top 20 B-Schools and among top 5 private B-schools in the country. Besides, it has an unbroken 35 years of placement record with around 300 industry partners. There are 5000+ registered alumni, of whom one-fifth are currently leading at CXO levels.

## PROGRAMMES OFFERED

### BBA (Hons)





# MANIPAL CENTRE FOR INNOVATION LEADERSHIP AND ENTREPRENEURSHIP (MILES)



# #INSPIRE ENTREPRENEURS

Manipal Centre for Innovation Leadership and Entrepreneurship (MILES) is a unique approach to the entrepreneurship journey, through experiential learning. It organises lecture series by successful leading entrepreneurs, who share with students how they were born and developed.

This practice takes students out of the classroom and encourages interaction with multiple successful entrepreneurs and Venture Capitalists, thereby encouraging participants' leadership skills with hands-on experiences, networking, and mentoring. MILES addresses all essential aspects of building one's own business.

## PROGRAMMES OFFERED

**Six different pathways in Innovation**

5G  
Semi-Conductor  
AI – Healthcare,  
Smart grids  
Agri-Tech  
Public health delivery

**Five-level structured program in Entrepreneurship**

Entrepreneurs' Talk Series (ETS)  
Horizontal courses  
Vertical courses  
Master Classes & Incubation

## SRISHTI MANIPAL INSTITUTE OF ART, DESIGN & TECHNOLOGY (SMI)

### PROGRAMMES OFFERED

**B.Voc**

Bachelor of Vocation

**B.Des**

Bachelor of Design

**BFA**

Bachelor of Fine Arts

**PGDP**

Postgraduate  
Diploma Programs

**MFA**

Master of Fine Art

**M.Des**

Master of Design

**M.Plan**

Master of Planning

**MA**

Postgraduate Arts Programs-  
Professional Practices

**Integrated Postgraduate  
Doctoral Programs**

**Doctoral Programs**

Srishti Manipal's mission is to creatively impact ecosystems and build new ecosystems that produce creative competencies ahead of the curve. Towards this mission, the institution entrusts itself with the role of producing capabilities through its professional, vocational and research programs.

This mission entails a deep understanding of the complex nature of our connected worlds and includes creating better futures for all, enabling pervasive creative competence with the confidence to tackle serious and meaningful challenges, and empowering people to drive transformational outcomes. We open new vistas by sensing, solving and shaping transformational opportunities, focusing on outcomes rooted in India and emerging worlds. Through unique pedagogies and interdisciplinary learning, SMI aims to present to the world designers and artists who will make new worlds and nurture our future.



# #INSPIRE NEW WORLDS



# SPORTS

Sport at MAHE is supported by our world-class facilities which includes a Sports Arena. The University Sports Service is committed to developing sport within the University.

MAHE sports history translates into a vibrant sports scene in the University today. With 6 world class outdoor playgrounds (Cricket, Football, Tennis, Volleyball, Basketball, Chess and Carrom Board) and a range of sporting societies, the University is one of the Nation's leading centers for student sport.





## Kalam

Social events and networking opportunities for students interested in or majoring in fields of communications, advertising, media production, journalism, public relations, sports media production and integrated marketing communications.

## PsychStead

Intellectual and social platform to discuss issues in the field of psychology, to spread awareness about the subject among students, plus create a setting for them to explore their personality, present their creativity, thoughts and ideas freely.

## LumiEre

From dramatics to literature, from poetry to music and dance, this can be the place to come and experience it all.

## LitLounge

Discover and learn more about community through literature: books, movies, art and much more.

## Cultural, Theatrics And Creative Arts Club

Theatrical events such as plays, experimental theatre, contributing through their artistic talents to spread awareness, understand and appreciate cultural diversity.

## Debating and Literary Club

Parliamentary debates, Model United Nations and related talks on current issues of national and international interest.

## STUDENT CLUBS

# Whole Life Experience



## Alyattes

Develop financial literacy, equip with theoretical knowledge and its practical use in personal finance for a better financial future through competitions and workshops.

## Moot Court Society

Mock Courts to develop public speaking skills and arguments in the courtroom and targeted legal drafting.

## Neura AI

A platform to learn and explore artificial intelligence. Members participate in exciting club projects where they hone their skills in AI and have fun while doing it.

## Astronomy Club

A platform for learning and discovering the fields of astronomy and astrophysics and thus cultivate and nurture the interest of astronomy enthusiasts.

## CodeX

Organizes events and workshops on web development, application development, machine learning, IoT etc., to enable members with right IT tools and programming knowledge.

## Akshay Urja

Voices concern on current environmental situations. Educates, encourages students to think of various ways through which the energy crisis issue can be solved.

## TeamARC

A utopia for enthusiasts of robotics, gadgets, and everything autonomous. It is the place to learn, explore, and grow.

## Potentiâ

Model United Nations, also known as Model UN is a simulation of the United Nations conference, where students are tasked with solving global issues through research, drafting, lobbying and debate to pass a resolution.

## Mimansa

The Debate Tedx Journalism Club (DTJ). Inculcates love for language and enhances literary skills among students.

## Photography Club

Platform for budding photographers to display their talents and improve through the constructive criticism provided by their peers.

## E Cell

Develops entrepreneurial qualities among students while building a network of entrepreneurs to inspire emerging new entrepreneurs.

## OMEGA

The Organisation for Managerial Entrepreneurial Guidance and Assistance (OMEGA) is a platform for conversations between students and local entrepreneurs, takes up live projects and helps students get exposure to real life business scenarios.



# The Manipal Advantage

AT A GLANCE

**250+**

International Collaborations

**2950+**

Renowned faculty  
from across the globe

**2,00,000+**

Global alumni network

The journey of Manipal Academy of Higher Education (MAHE) began in 1952 when Padma Shri Dr. T. M. A. Pai, the founder of Manipal, started India's first private medical school, the Kasturba Medical College (KMC). Today, MAHE hosts more than 300 programs across 31 disciplines. It has campuses at Manipal, Mangalore, Bangalore, Jamshedpur, Dubai, and Malacca. The University has been consistently ranked in various surveys as the No. 1 private University in the country.

The crowning moment for MAHE came when it was declared as an Institution of Eminence (IoE) by the Government of India on 9 July 2018. MAHE's IoE status comes with its ability and resources to become a world-class teaching and research institution. MAHE boasts of more than 250+ active collaborations with international Universities.



## ESTEEMED MAHE ALUMNI



**Rajeev Suri**  
CEO, Inmarsat



**Satya Nadella**  
CEO, Microsoft

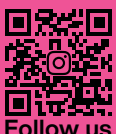


**Vikas Khanna**  
Michelin Star Chef



**Nithya Menen**  
Indian Actress





Follow us



+917411747070 | +91 9243777722



[admissions.maheblr@manipal.edu](mailto:admissions.maheblr@manipal.edu)



[www.manipal.edu/bengaluru](http://www.manipal.edu/bengaluru)

Manipal Academy of Higher Education (MAHE),  
(Institution of Eminence Deemed to be University)  
Govindapura, Yelahanka, Bengaluru 560064, Karnataka, India